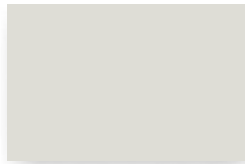


Central Texas Metal Roofing Supply Company, Inc.

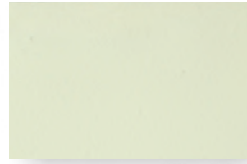
www.ctmrs.com



BUCKSKIN



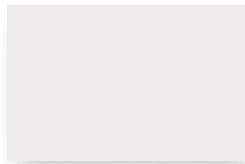
PARCHMENT



ALMOND



AGED BRONZE



SHASTA WHITE



FOREST GREEN



PATINA GREEN



SIERRA TAN



MEDIUM BRONZE



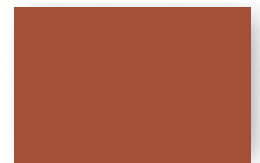
CHARCOAL GREY



HEMLOCK GREEN



BRISTOL BLUE



TERRA-COTTA



DARK BRONZE



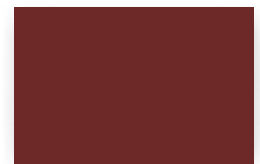
ZINC GREY



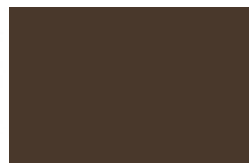
HARTFORD GREEN



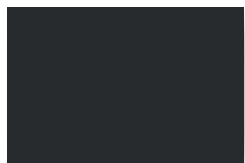
ROYAL BLUE



COLONIAL RED



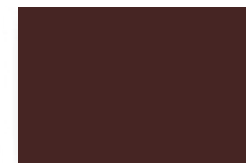
COPPER BROWN



MATTE BLACK



TEAL GREEN



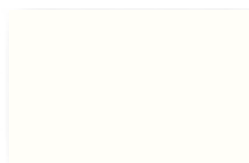
BURGUNDY



DEEP RED

PREMIUM COLORS

Premium colors require a nominal surcharge.



NATURAL WHITE



AWARD BLUE

NATURAL METAL FINISH

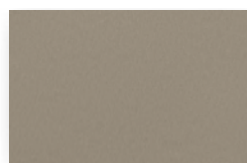
Satin Finish Galvalume® is pretreated to remove mill oils, chemicals and residue and coated on the back side to inhibit corrosion. The top side receives a clear plastic strippable film.



SATIN FINISH GALVALUME®

METALLIC COLORS

Metallic colors are premium finishes which require a nominal surcharge. Due to limitations in the matching process, please request actual color chips for accurate color viewing.



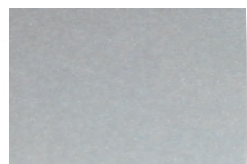
CHAMPAGNE



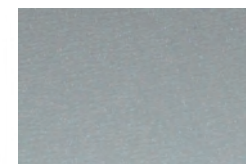
COPPER-COTE™



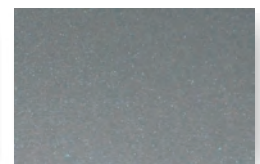
ANTIQUÉ COPPER-COTE



ZINC-COTE™



LEAD-COTE™



PREWEATHERED GALVALUME®



All colors except Award Blue comply with LEED® 2.2 & Energy Star requirements for roof slopes greater than 2:12. Almond complies with LEED® 2.2 requirements for low slopes. Natural White complies with LEED® 2.2 & Energy Star requirements for low slopes.

KYNAR 500® or HYLAR 5000™ SPECIFICATIONS FOR GALVANIZED AND GALVALUME® COIL COATING APPLICATIONS:

FILE PROPERTY	TESTING METHOD	KYNAR 500® or HYLAR 5000™
Colors Available	---	See color chart on reverse side
Specular Gloss	ASTM D-523-80	Low and medium gloss only
Color Uniformity	ASTM D-2244-79	Color controlled both instrumentally & visually
Dry Film Thickness	ASTM D-1400-81, ASTM D-1005-84 NCCA 11-13, 11-14, 11-15	Primer .25 ± 0.05 mil, topcoat .8 mil ± 0.05 mil
Hardness	ASTM D-3363-89, *NCCA 11-12 Eagle Turquoise Pencils	H.B. Minimum
Adhesion (X-Cut)	ASTM D-3359-90	No Adhesion Loss
Adhesion (Crosshatch)	ASTM D-3359-90	No Adhesion Loss
Direct Impact Flexibility	ASTM D-2794-84 Gardner Impact Tester, 1/10" Distortion	Excellent, no removal
Reverse Impact Flexibility	NCCA Spec. 11, ASTM D-2794-84 Gardner Impact Tester, 5/8" ball, impact force in inch pounds equal to metal thickness.	Excellent, no cracking or loss of adhesion
Formability	ASTM D-4145 180° T-Bend on 1/8 Mandrel	No cracks or loss of adhesion
Salt Spray Resistance	ASTM B-117-73 (1992)	Passes 1000 hours on H.D.G. Steel, 1000 hours on GALVALUME®
Humidity Resistance	ASTM D-2247 (1987)	Passes 2000 hours on H.D.G. Steel, 2000 Hours on GALVALUME®
Acid Resistance	ASTM D-1308-79 (1987) Proc. 3.1.1 10% Sulphuric acid spot test - 24-hour exposure	Excellent, no effect
Alkali Resistance	ASTM D-1308-79 (1981) Proc. 5.210% Sodium Hydroxide	Excellent, no effect
Abrasion Coefficient	ASTM D-968-81	100 Liters/Mil topcoat
Detergent Resistance	ASTM D-2248 72 hours immersion 3% solution at 100° F	Excellent, no effect
Resistance to Acid Pollutants	ASTM D 1308-87 Proc. 3.1.1 24-hour exposure 10% HNO ³ vapors	Excellent - no effect
Weathering - Color Retention	ASTM D-2244-89 20 yrs., 45° South Florida	Maximum 5 NBS units Color change
Weathering - Chalk Resistance	ASTM D-659-86 20 yrs., 45° South Florida	Rating of 8 Minimum
Erosion	20 yrs., 45° South Florida	Maximum 15% loss

NOTES:

- 1. ASTM -- American Society for Testing Materials
- 2. NCCA -- National Coil Coaters Association

- 3. GALVALUME® is 55% Aluminum-Zinc alloy coated sheet steel and is a registered trademark of BIEC International, Inc.

Headquarters / Sales Office

830 Sagebrush Dr.
Austin, TX 78758
Phone: (512) 452-1515
Toll: (800) 428-7412
Fax: (512) 833-7499

Manufacturing Plant / Sales Office

720 W IH-10
Seguin, TX 78155
Phone: (830) 379-3600
Toll: (877) 622-8677
Metro: (210) 822-7663
Fax: (830) 379-8753

