

# TGKX.180B - ROOF DECK CONSTRUCTIONS

## Design/System/Construction/Assembly Usage Disclaimer

- Authorities Having Jurisdiction should be consulted in all cases as to the particular requirements covering the installation and use of UL Certified products, equipment, system, devices, and materials.
- Authorities Having Jurisdiction should be consulted before construction.
- Fire resistance assemblies and products are developed by the design submitter and have been investigated by UL for compliance with applicable requirements. The published information cannot always address every construction nuance encountered in the field.
- When field issues arise, it is recommended the first contact for assistance be the technical service staff provided by the product manufacturer noted for the design. Users of fire resistance assemblies are advised to consult the general Guide Information for each product category and each group of assemblies. The Guide Information includes specifics concerning alternate materials and alternate methods of construction.
- Only products which bear UL's Mark are considered Certified.

---

## Roof Deck Constructions

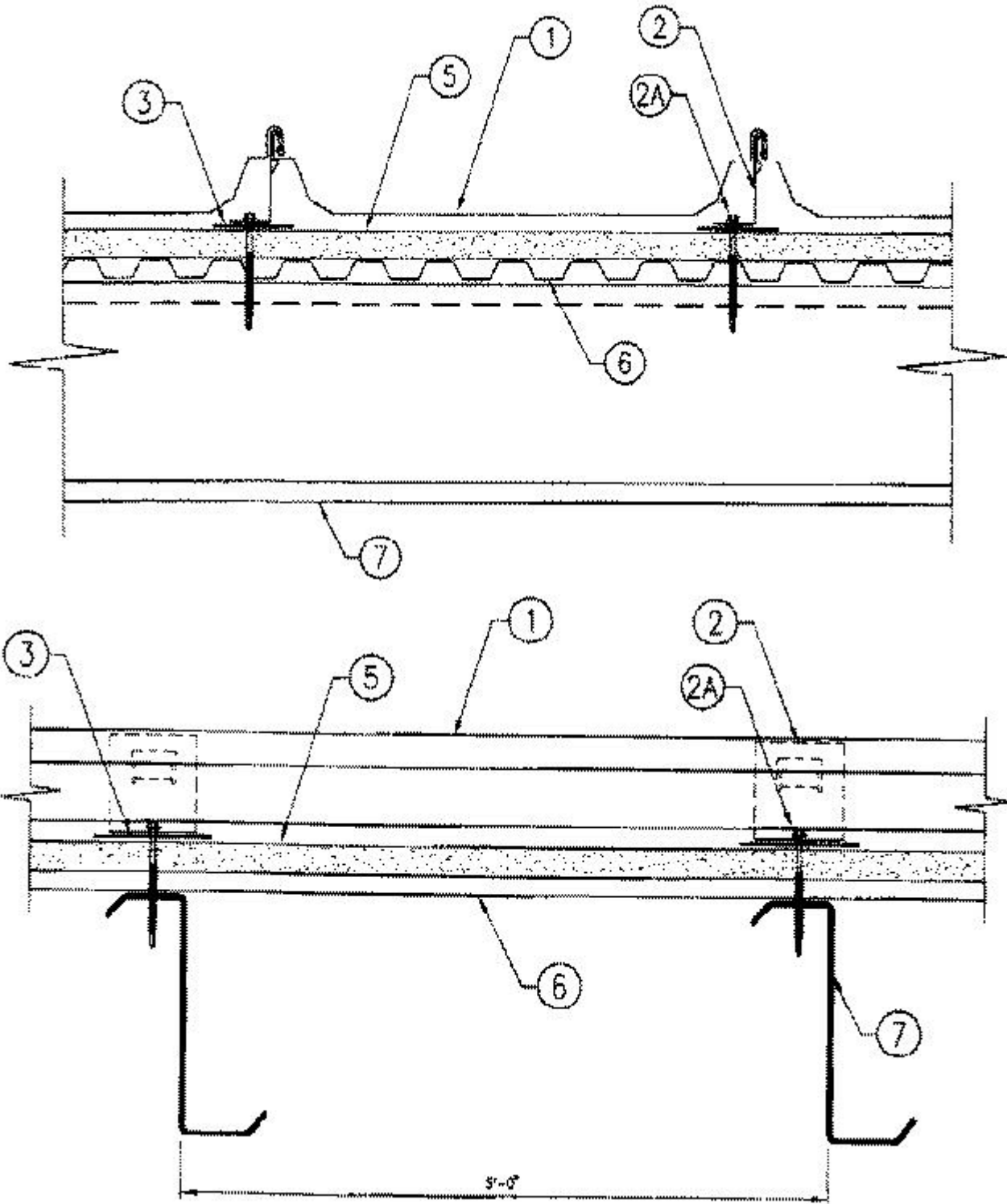
See General Information for Roof Deck Constructions

### **Construction No. 180B**

March 19, 2015

**Uplift — Class 90**

**Fire Not Investigated**



1. **Metal Roof Deck Panels\*** — No. 24 MSG min coated steel. Panels continuous over two or more spans. Endlaps to occur adjacent to purlin with panels overlapped 3 in. A bead of sealant may be used at panel end joints. ("Guardian II" only — Adjacent panels may be seamed with electric seamer with seaming operation to include roof deck fasteners (Item 2). Male/female side laps shall remain interlocked and fully engaged after seaming).

**A & S BUILDING SYSTEMS L P** (View Classification) — "Ultra-Dek"

**B C STEEL BUILDINGS INC** (View Classification) — "BCL-SD"

**CENTRAL STATES MFG INC** (View Classification) — "Centra Loc"

**CENTRAL TEXAS METAL ROLLFORMING INC** (View Classification) — "Shurloc 300"

**CHIEF INDUSTRIES INC** (View Classification) — "STC".

**CORLE BUILDING SYSTEMS INC** (View Classification) — "Corle Snap Seal".

**MBCI** (View Classification) — "Ultra-Dek " .

**MESCO METAL BUILDINGS** (View Classification) — "Ultra-Dek"

**NCI BUILDING SYSTEMS L P** (View Classification) — "Ultra-Dek"

**PINNACLE STRUCTURES INC** (View Classification) — "PINNACLE U-DEK"

**TEXAS BUILDING AND ROOFING SUPPLIES INC** — "Standing Seam" Panel

**UNITED STRUCTURES OF AMERICA INC** (View Classification) — "Guardian I", "Guardian II" (seamed only)

**WHIRLWIND STEEL BUILDINGS INC** (View Classification) — "Super-Seam II".

2. **Roof Deck Fasteners\*** — Clip used with an upper tab clip to engage the metal roof deck panel rib (Item 1). Height to be 3-3/8 in. when no thermal spacer (Item 4) is used and 4-3/8 in. when a thermal spacer is used. Clips are spaced 5 ft OC max along length of panels, located at the panel ribs with three guide holes in the bottom to accommodate screw fasteners (Item 2A).

**BUILDING PRODUCTS DEVELOPMENT INC** (View Classification) — "NC34503", "NC34504"

**CHIEF INDUSTRIES INC** (View Classification) — "STC Sliding Clip"

**NCI BUILDING SYSTEMS L P** (View Classification) — "Ultra-Dek Fixed Clip" or "Ultra-Dek Articulating Clip" or "Ultra-Dek Floating Clip" or "Ultra-Dek Sliding Clip".

2A. **Fasteners (Screws)** — Screws used to attach panel clips to purlins (Item 7) to be No. 14 Hex Washer Head self-drilling or self-tapping. Length to be 3/4 in. longer than thickness of rigid insulation (Item 5) and liner panel (Item 6). Two screws per clip. Screws used at endlap are to be 1 in. long and same type as above. When the 18 gauge cinch strap is used, five screws are to be used in the flat section of the endlap panel with the first screw located 3 in. from either rib, and then spaced in a 3-6-6-3 in. pattern. An additional screw is to be located at the second slanted segment of the rib on both sides of the endlap panel and one additional screw located at the first slanted segment on both sides of one rib. When the 16 gauge cinch strap is used, screws to be No. 14 by 1 in. long self-tapping. First screw is located 3/8 in. from first slanted segment in a 4 - 5-1/2 - 5-1/2 - 4 in. pattern. One additional screw is located 1/2 in. from first slanted segment on opposite side of same rib where first screw is located.

3. **Bearing Plate** — No. 16 MSG min coated steel, 3-7/8 in. wide by 5 in. long. Used under panel clip (Item 2).

4. **Thermal Spacer** — (Optional) (Not Shown) — Polystyrene, 1 in. max thickness, 3 in. wide, cut to fit between panel clips.

5. **Foamed Plastic (Rigid Insulation)** — (Optional) — Foamed plastic, min thickness 1 in., max thickness 4.4 in. Density to be 2 pcf or see products Classified under TJBX.

6. **Liner Panel** — (Optional) — No. 29 MSG min coated steel. Ribs to be 9/16 in. deep with a 3/4 in. wide crest and spaced 2.67 in. OC.

7. **Purlins** — 14 MSG min coated steel, (55,000 min yield strength).

Refer to General Information, Roof Deck Construction, (Roofing Materials and Systems Directory) for Items Not Evaluated.

**\* Indicates such products shall bear the UL or cUL Certification Mark for jurisdictions employing the UL or cUL Certification (such as Canada), respectively.**

Last Updated on 2015-03-19

---

The appearance of a company's name or product in this database does not in itself assure that products so identified have been manufactured under UL's Follow-Up Service. Only those products bearing the UL Mark should be considered to be Certified and covered under UL's Follow-Up Service. Always look for the Mark on the product.

UL permits the reproduction of the material contained in the Online Certification Directory subject to the following conditions: 1. The Guide Information, Assemblies, Constructions, Designs, Systems, and/or Certifications (files) must be presented in their entirety and in a non-misleading manner, without any manipulation of the data (or drawings). 2. The statement "Reprinted from the Online Certifications Directory with permission from UL" must appear adjacent to the extracted material. In addition, the reprinted material must include a copyright notice in the following format: "© 2019 UL LLC"